



"LIFE IS ART" NEWS



October 1st, 2010

LIFEART PROSTHETICS INC.
WWW.LIFEART.CA

Issue 4

Breast Form Legislation Introduced! Take A Look [Here](#)

Laugh Therapy

Bra Sizes Explained

Have you ever wondered why A, B, C, D, DD, E and F are the letters used to define bra sizes?

If you have wondered why, but couldn't figure out what the letters stood for... It is about time you became informed:

- A ... Almost Boobs
- B ... Barely there.
- C ... Can't Complain!
- D ... Damn!
- DD... Double damn!
- E ... Enormous!
- F ... Fake

Upcoming Events

There are two upcoming events being held by the Canadian Breast Cancer Network (CBCN):

[Young Women's Conference](#)—October 29-31, 2010

[CBCN Online auction](#) See this hand sculpture by Wendy Smith and more art-work at the auction website. For more information visit www.cbcn.ca or click on the links above.



History of the Pink Ribbon

In the early 1990's a 68 year old woman named Charlotte Hayley began making peach coloured ribbons in her home. She had a daughter, sister and mother who have all had breast cancer. She would hand out her peach ribbons in supermarkets with a card that said: "The National Cancer Institute annual budget is \$1.8 billion, only 5 percent goes for cancer prevention. Help us wake up our legislators and America by wearing this ribbon." She would also write to prominent women about the issue.

Word spread about the ribbons, and they caught the eye of executives from *Self Magazine*. They wanted to help spread the word and asked Haley if they could use her ribbon. Hayley refused because it would be too commercial. They really wanted to do a ribbon, so their lawyers suggested that they change the color. The magazine went with a pink ribbon, and soon this became the world wide symbol for breast cancer.

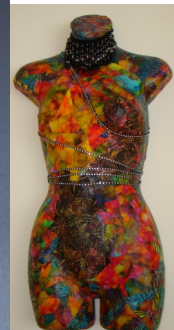
For more information on the history of the pink ribbon visit:

[Think Before You Pink](#)

When Can I Get a Breast Prosthesis?

A custom breast prosthesis can be made for you at anytime in your breast cancer journey. You may choose to have a cast taken prior to mastectomy surgery or you may have the cast done after the surgery. Whatever is comfortable for you is the right time. Some women feel well enough to wear a

soft prosthesis soon after surgery. It is important to follow your doctor's recommendations in regards to wearing a breast prosthesis. A good time to have a custom breast prosthesis created for you is when the skin has healed and your body has stopped changing. A consultation with your Prosthetist can really be helpful at this time.



If you do not wish to receive this newsletter please email wendy.smith@lifeart.ca or call 334-1206